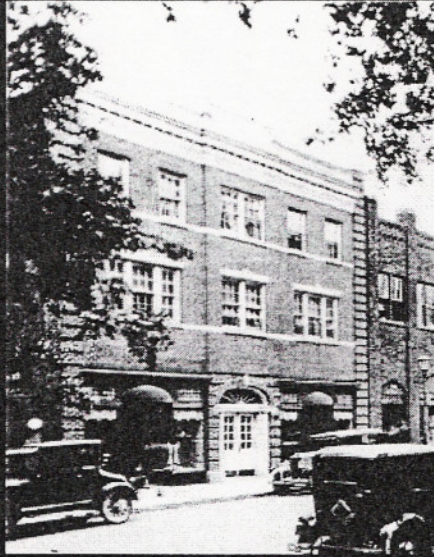


## STATE COLLEGE HISTORIC SITE



### Campus View Apartments/Schlow Building

The Schlow Building, designed by State College architect P. Boyd Kapp, was built in 1925 as the 12-unit Campus View Apartments. (The photograph shows the brand-new building.) It was the first State College apartment building with a sprinkler system.

Schlow's Quality Shop, the building's longest-lived retail tenant, was here until 1968. It shared storefront space for the first three of its 43 years with The Blue Moon restaurant. Schlow's was operated by building owners Charles and Bella S. Schlow and their son, Frank Schlow, then by their daughter and son-in-law, Irma and Harold Zipser.

Schlow's specialty was women's clothing. Other merchandise came and went. From the mid-1930s to the late 1940s, Schlow's had a gift department. The basement level carried furniture and appliances in the 1940s, then dry goods (yarns, fabrics, and linens), ladies' shoes, and children's orthopedic shoes. In the late 1950s and early 1960s, Maude Mayes and her hand-made ladies' hats had a downstairs space.

Other clothing stores followed, into the 1990s: Town & Campus Ladies Shop, Wrangler Roost, Lady Bug, Towne Gentlemen & Towne Ladies, and 110 Connection.

